

Legend

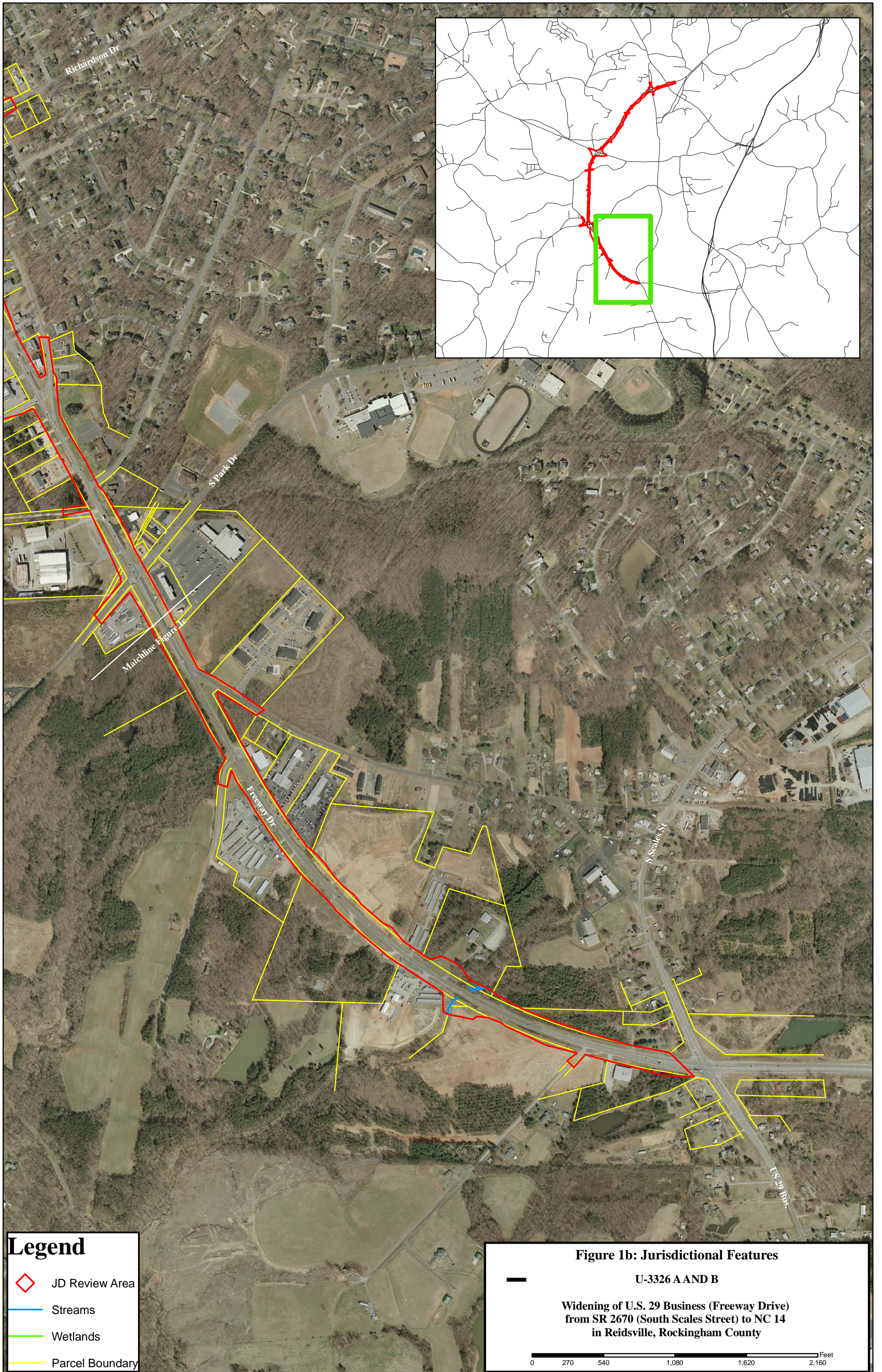
- ◇ JD Review Area
- Streams
- Wetlands
- Parcel Boundary

Figure 1a: Jurisdictional Features
U-3326 A AND B

**Widening of U.S. 29 Business (Freeway Drive)
 from SR 2670 (South Scales Street) to NC 14
 in Reidsville, Rockingham County**

Feet

0 750 1,500 3,000 4,500 6,000



Legend

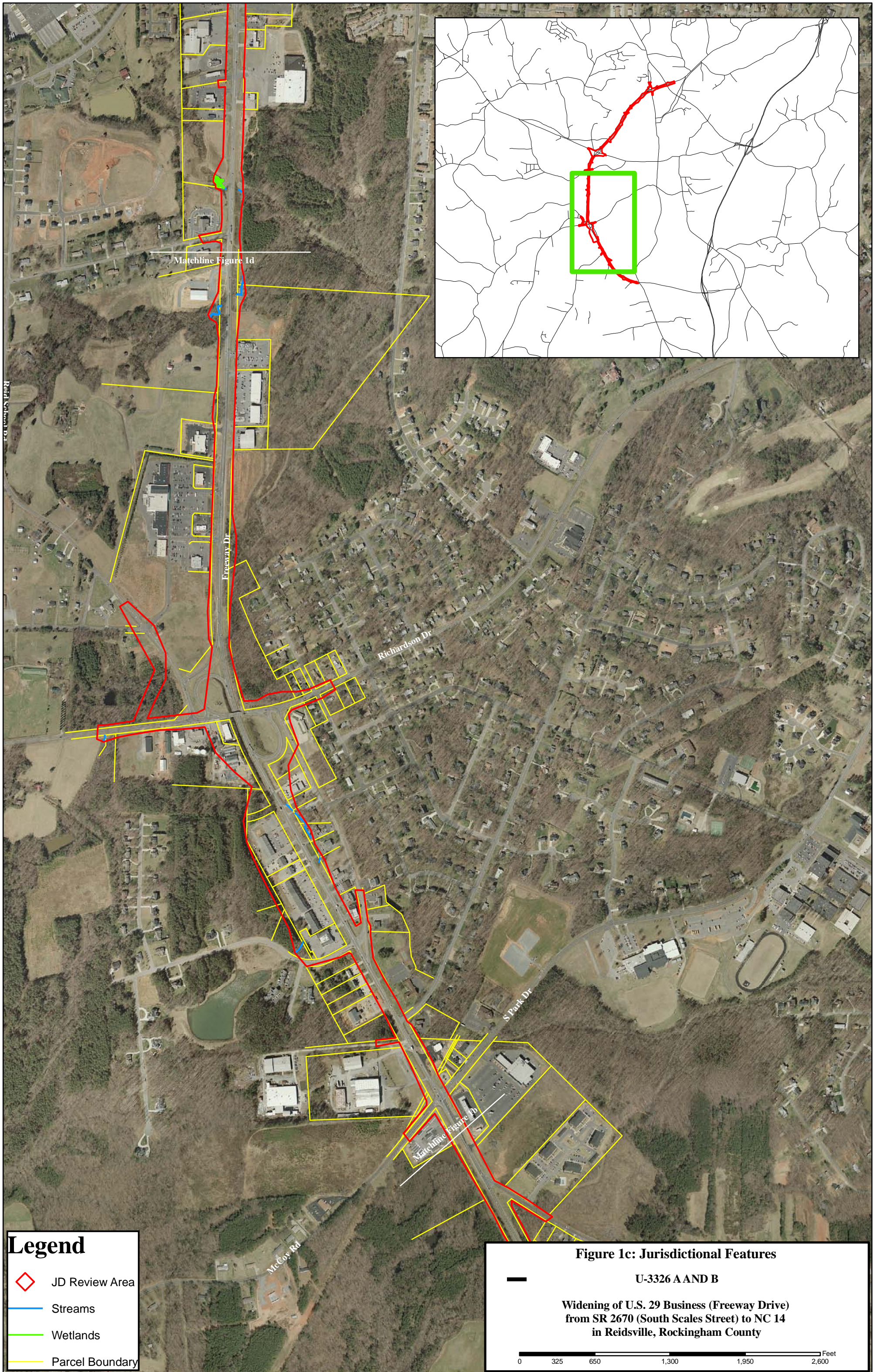
- ◇ JD Review Area
- Streams
- Wetlands
- Parcel Boundary

Figure 1b: Jurisdictional Features
U-3326 A AND B

Widening of U.S. 29 Business (Freeway Drive)
from SR 2670 (South Scales Street) to NC 14
in Reidsville, Rockingham County

Feet

0 270 540 1,080 1,620 2,160



Legend

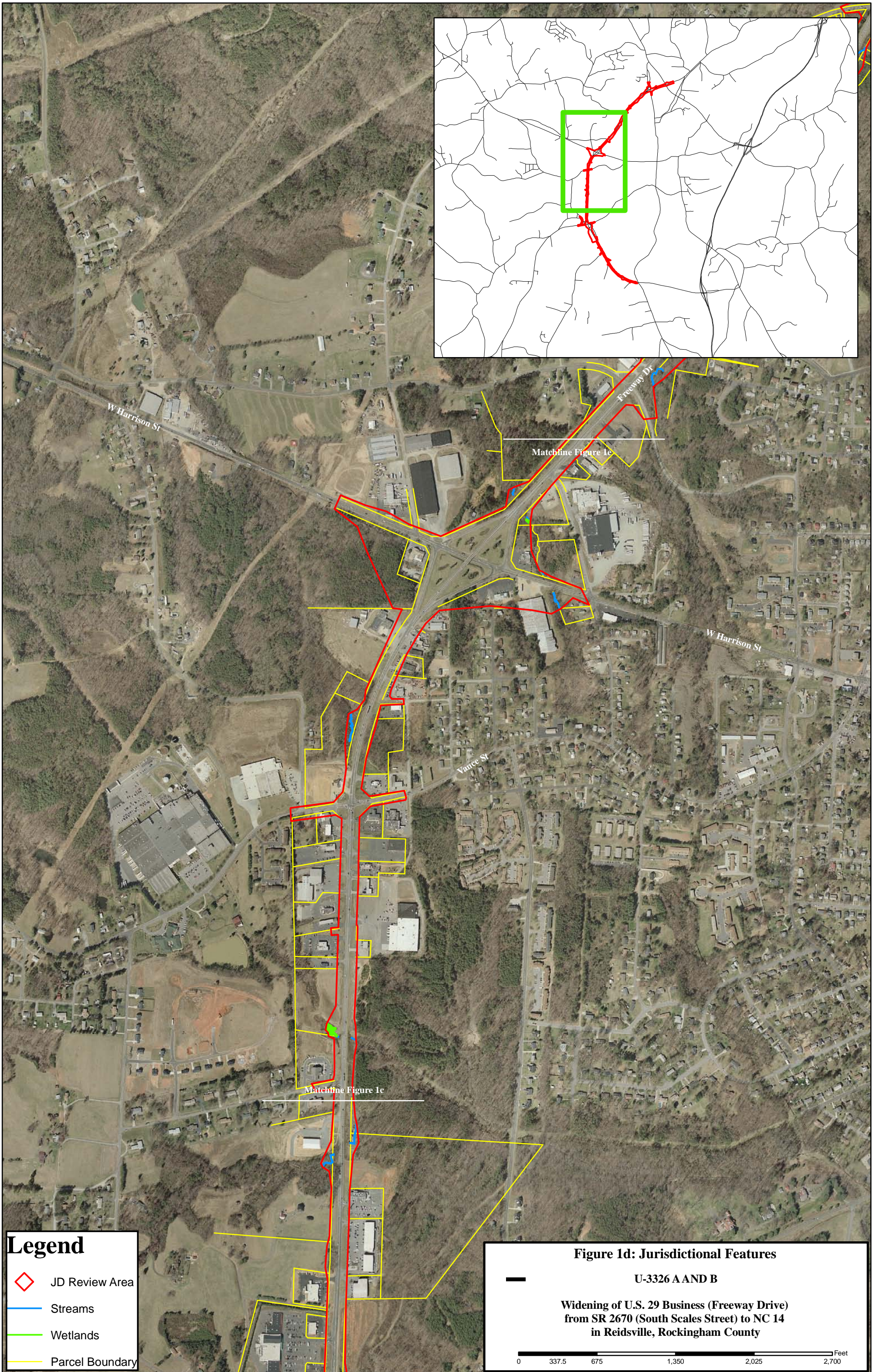
- ◊ JD Review Area
- Streams
- Wetlands
- Parcel Boundary

Figure 1c: Jurisdictional Features

U-3326 A AND B

**Widening of U.S. 29 Business (Freeway Drive)
from SR 2670 (South Scales Street) to NC 14
in Reidsville, Rockingham County**

0 325 650 1,300 1,950 2,600 Feet



Legend

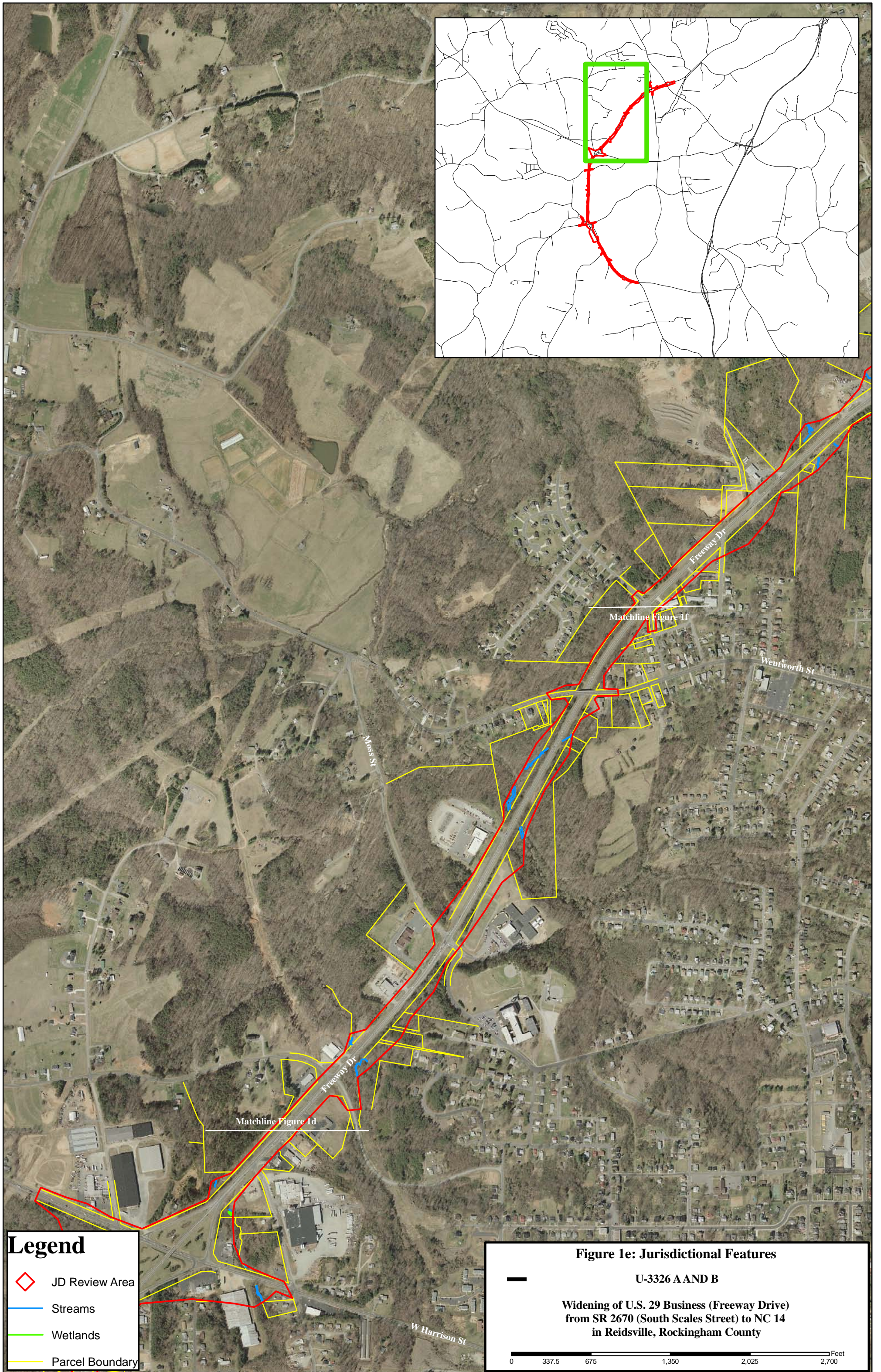
- ◇ JD Review Area
- Streams
- Wetlands
- Parcel Boundary

Figure 1d: Jurisdictional Features

U-3326 A AND B

**Widening of U.S. 29 Business (Freeway Drive)
from SR 2670 (South Scales Street) to NC 14
in Reidsville, Rockingham County**

0 337.5 675 1,350 2,025 2,700 Feet



Legend

- ◇ JD Review Area
- Streams
- Wetlands
- Parcel Boundary

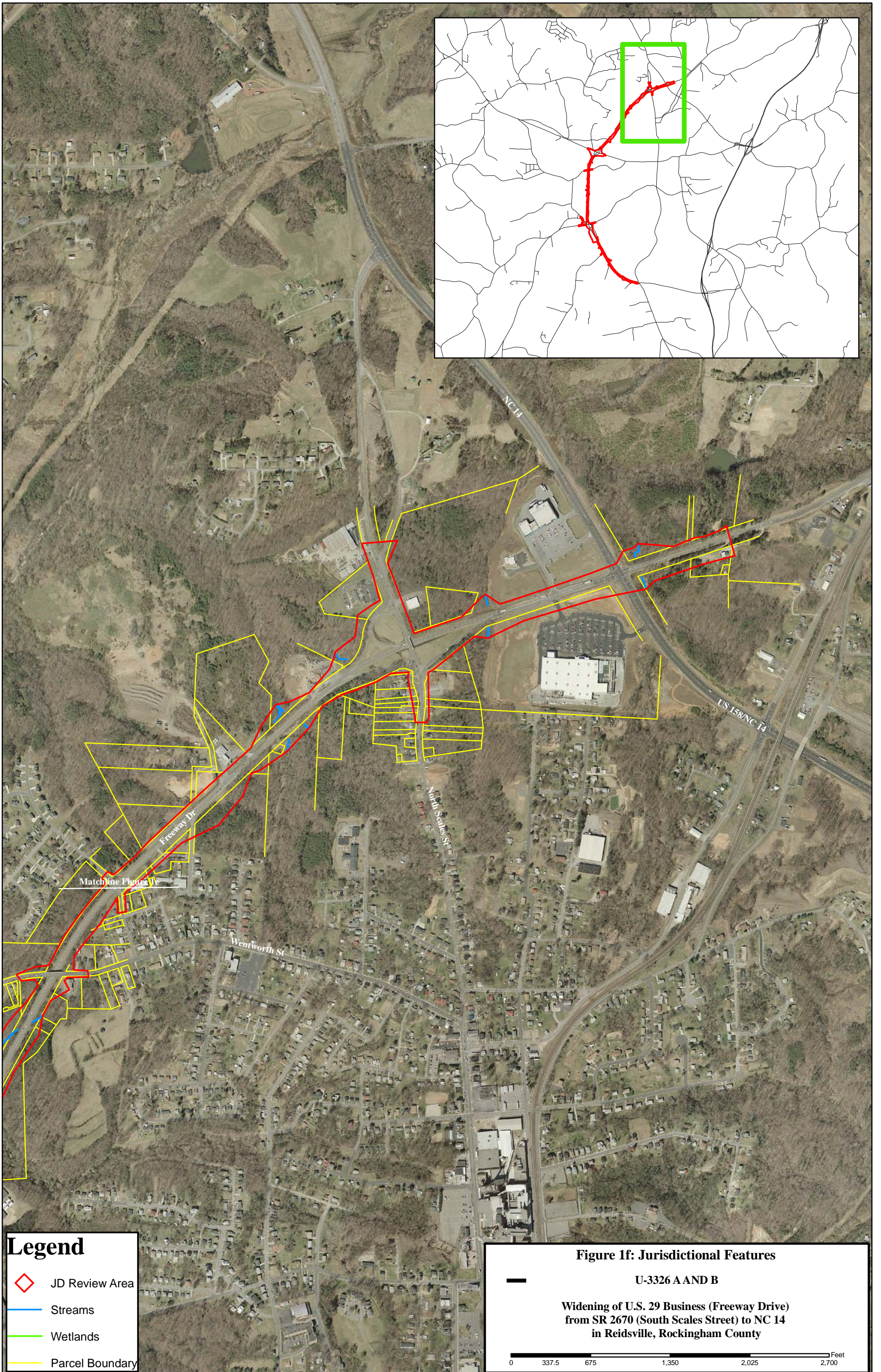
Figure 1e: Jurisdictional Features

U-3326 A AND B

Widening of U.S. 29 Business (Freeway Drive)
from SR 2670 (South Scales Street) to NC 14
in Reidsville, Rockingham County

Feet

0 337.5 675 1,350 2,025 2,700



Legend





-  JD Review Area
-  Streams
-  Wetlands
-  Parcel Boundary

Figure 1f: Jurisdictional Features

U-3326 A AND B

Widening of U.S. 29 Business (Freeway Drive) from SR 2670 (South Scales Street) to NC 14 in Reidsville, Rockingham County

0 337.5 675 1,350 2,025 2,700 Feet